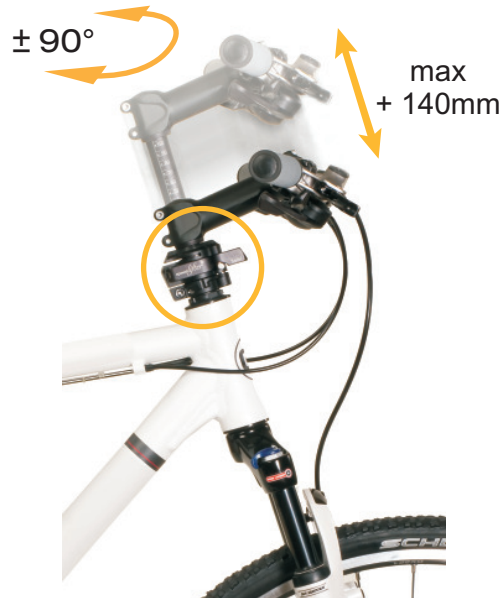


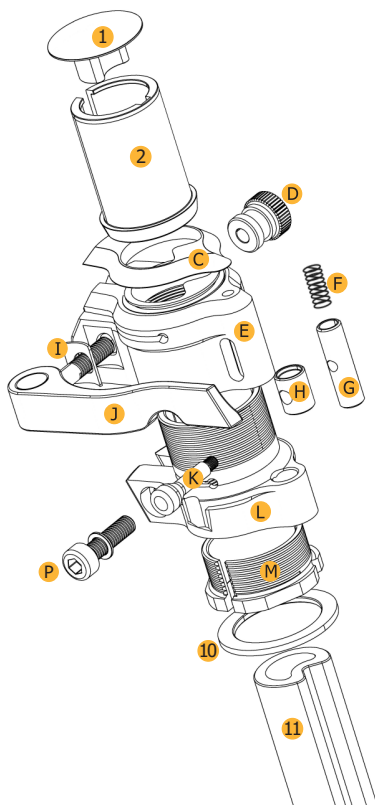
The Speedlifter twist functions

- handlebar height adjustment up to 140mm
- handlebar twisting $\pm 90^\circ$

The Speedlifter twist is a handlebar-height-adjustment system with a special twist function for stem and handlebars (A-Head fork tube required). Based on the proven and tested height-adjustment system of the Speedlifter Classic, with its quick-release operation, twist-slip protection, and stem shaft extraction safety stop, the twist provides the additional option of rotating the stem and handlebars 90 degrees to the left or right. Absolutely no tools are necessary, and the adjustment is made with the utmost simplicity, safety, and speed. By lifting a safety-bolt - which, in the riding position, is of course solidly engaged - the two-part CNC-manufactured construction unit made from high-strength black-anodized aluminum can be rotated horizontally in seconds. When the stem and handlebars reach the 90-degree storage position, the safety-bolt automatically clicks into place. In this way, the width of the bicycle is greatly reduced, and it takes up less space in storage and during transport. Installing the Speedlifter twist is possible on bicycles with 1 1/8" A-Head fork tubes.



speedlifter[®] twist



Package Contents

- 1 top cap
- 2 special alloy shim
- C rubber seal
- D alloy adjustment-nut with anti-theft device
- E Speedlifter twist body (upper part)
- F safety-bolt spring
- G safety-bolt
- H nut, M6
- I sliding washer, stainless steel
- J quick-release lever
- K safety-bolt lever
- L Speedlifter twist body (lower part)
- M alloy adjustment ring
- 10 alloy spacer, 2mm
- 11 stem quill with graduated scale
- P locking allen-bolt, M6, with U-ring
- short operating instructions
- installation manual

Requirements:

Minimum distance between top end of 1 1/8" fork tube (inner diameter 24.4mm, 24.6mm and 25.4mm) and headset ≥ 46 mm. Slit fork tube as described in Speedlifter Classic assembly instructions.
Further technical information:
www.speedlifter.com

Special for all Speedlifter Classic Users

upgrade kit

classic → twist



by.schulz gmbh

Sulzbachstraße 49
D-66111 Saarbrücken

Tel. +49 (0)681 / 93 815 380
Fax +49 (0)681 / 93 815 381

www.byschulz.com
info@byschulz.com